

Don't stay at home!

Accessibility in the Natural Parks Network of Barcelona Provincial Council



**Diputació
Barcelona**

Natural Parks Network



- 100 municipalities
- 12 natural areas
- 102.587 ha (22% of territory, 70% of the population)
- Managing Parks since 1972
- 144 PU and EE equipments
- 633.500 users
- 186 routes (1.850 km)
- 12.500 students attended

Since 2005-2006

Incorporation of accessibility in NPN

**Education
environmental
programs and services**



**Teaching
materials and
resources**



**Accessible and
practicable
itineraries**



“La Caixa” social work finances much of the project

Education environmental programs and services

“Get to know our Parks”

- **Inclusive school** programs (upper primary cycle).
- Ordinary schools and **special education centers**.
- **Adaptation** of itineraries, activities and teaching resources.
- **Free access** for schools



“Experience the park at school”



Inclusive theatrical routes

- **All types of audiences.**
- **Playful** side.
- Adapted to **functional diversity**.
- **Free access.**



***“Get to know our
Parks”***



*“Experience the park
at school”*



Inclusive theatrical routes



Since 2005-2006

Incorporation of accessibility in NPN

**Education
environmental
programs and services**



**Teaching
materials and
resources**



**Accessible and
practicable
itineraries**



“La Caixa” social work finances much of the project

Teaching materials and resources

Creation and adaptation of teaching materials

- 25 suitcases of inclusive wildlife tokens.
- 25 suitcases of inclusive flora.
- 50 inclusive tactile maps of the parks.
- 20 inclusive dossiers of signposted itineraries
- 60 children's stories (in braille)
- 100 3D embossed maps
- 1 Joëlette User Manual

Material to support access

- 9 handbikes.
- 7 Joëlettes.
- 14 third wheels.
- 20 directional bars.

Other resources

- Tactile interpretative murals.
- Tactile maps.
- Website.
- The accessible video "Don't stay at home".

Creation and adaptation of teaching materials

Guineu o guilla *Vulpes vulpes*
 Família: cànids
 Ordre: carnívors
 Classe: mamífers



Prem
i
escolta

Cap i cos de 80 cm, cua de 48 cm i alçada a la creu de 40 cm. Pot pesar 10 kg. Aspecte inconfusible i conegut. Animal descarat i oportunista: sovint, no volen desapropiar l'oportunitat d'apropar-se a l'home per aconseguir menjar. Sobretot nocturn però observable de dia. Presència a tota la X de Parcs Naturals.

rastres d
es pot es
mascles
l'arribada
era una fe
seva pell.

Guineu amb cos de pe
front. En distingim les
punxegudes i el muse
davantera queda am
apreciem les dues d
frondosa i llarga cua

Fagina o gorja blanc *Martes foina*
 Família: mustèlids
 Ordre: carnívors
 Classe: mamífers

Prem
i
escolta



Fagina pràcticament de perfil en acció de grimpar, i cap de front. Frondosa i llarga cua, cos amb pelatge llarg, i cap petit amb orelles punxegudes i bigotis al musell. Potes replegades que acaben en ungles esmolades.



Àliga perdiguera
Aquila fasciata

Il·lustracions: A. Ojea Gallegos

Versió tàtil a càrrec de Comacess i
Touch Graphics Europe



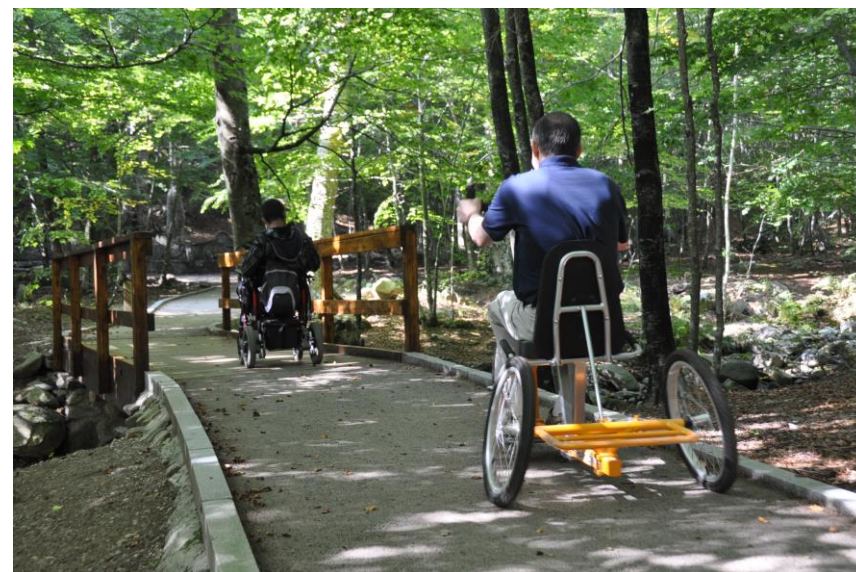
Creation and adaptation of teaching materials



Material to support access



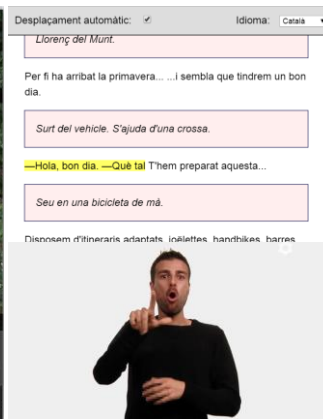
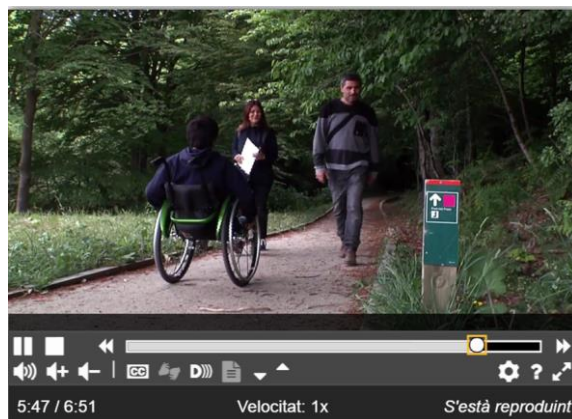
Material to support access



Material to support access



Other resources



Accessibilitat a la Xarxa de Parcs Naturals

Programas/materiales • Itinerarios • Material préstamo • Equipamientos • Juegos inclusivos •

Presentación

El Área de Territorio y Sostenibilidad de la Diputación de Barcelona lleva a cabo acciones encaminadas a facilitar el acceso al medio natural a las personas con discapacidades. Las dificultades de algunos colectivos para realizar actividades (itinerarios, rutas guiadas, actividades lúdicas, actividades escolares, ...) que se ofrecen en los espacios protegidos reclama que se hagan todos los esfuerzos posibles para mejorar la accesibilidad de todos.

Dentro del ámbito del Convenio de colaboración entre "la Caixa" y la Diputación de Barcelona para el desarrollo del **Plan de gestión integral para la conservación de los sistemas naturales de la Red de Parques Naturales**, se están llevando a cabo algunos proyectos para adaptar itinerarios señalizados y programas pedagógicos al colectivo de personas con discapacidades físicas y sensoriales.

Agenda

Ruta teatralizada inclusiva - Aigua, un viatge pels sentits
Itinerari guiat | Visites guiades
Data d'inici: 03/09/2016. Hora: 11.00 h. Data de fi: 03/09/2016

Ruta teatralizada inclusiva - Aigua, un viatge pels sentits
Itinerari guiat | Visites guiades

Vídeos

No te quedes en casa. La accesibilidad en los parques



Notícies

Jornades adaptades de senderisme al Parc del Montnegre i el Corredor
Montnegre-Corredor

Recapte d'aliments solidaris en ocasió de la 25a edició del Viu el parc!
Sant Llorenç d'Obrac

Contacto

Red de Parques Naturales
Contra d'Urgell, 187
Edificio del Redol, 3a planta
08036 Barcelona
C/o: xarxaparc@diba.cat
Tel: 934 022 843
Fax 934 022 439
■ [Buzón de sugerencias](#)



Destacados

- Itinerarios accesibles
- Materiales de préstamo
- La accesibilidad en los parques [pdf]



Since 2005-2006

Incorporation of accessibility in NPN

**Education
environmental
programs and services**



**Teaching
materials and
resources**



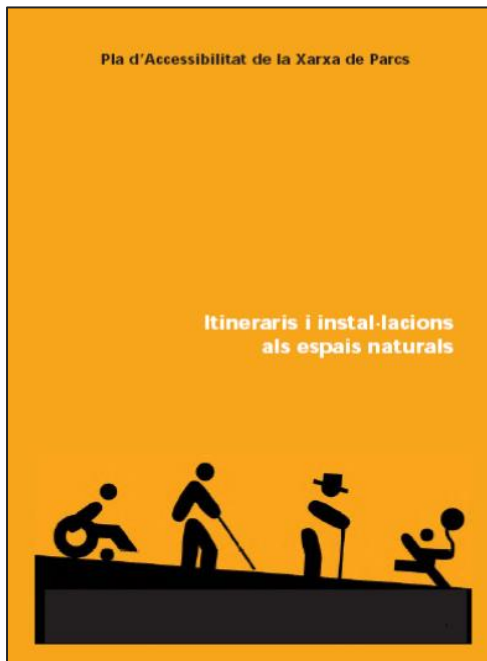
**Accessible and
practicable
itineraries**



“La Caixa” social work finances much of the project

Law 13/2014, 30th October, on accessibility

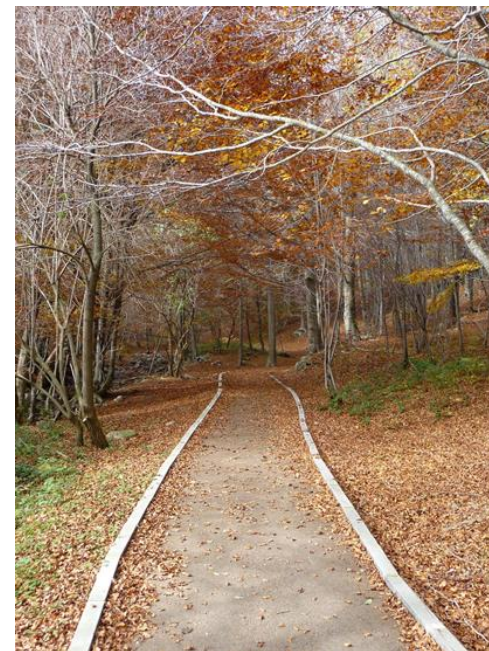
Accessibility plan



Maintenance plan



Accessible and practicable itineraries



NPN Accessibility Plan

- **Audit of existing equipment** to define actions to improve the accessibility of the facilities.
- **Creation of adapted itineraries:** location and needs (€ 60.000 per 1,000 m)
- **Specific training** for staff involved in the programming and execution of educational and information activities.



NPN Maintenance Plan

The administrations responsible for natural spaces and urban spaces for public use must

- **maintain the elements** that guarantee accessibility
- have a maintenance **plan for accessibility**



Accessible and practicable itineraries

Accessible: the condition of an environment that **guarantees autonomous, safe and comfortable use for all people.**

Practicable: These itineraries, although not accessible to everyone, present **added values for specific groups.**



6 accessible itineraries



6 accessible itineraries



2 practicable itineraries



Thank you!

