

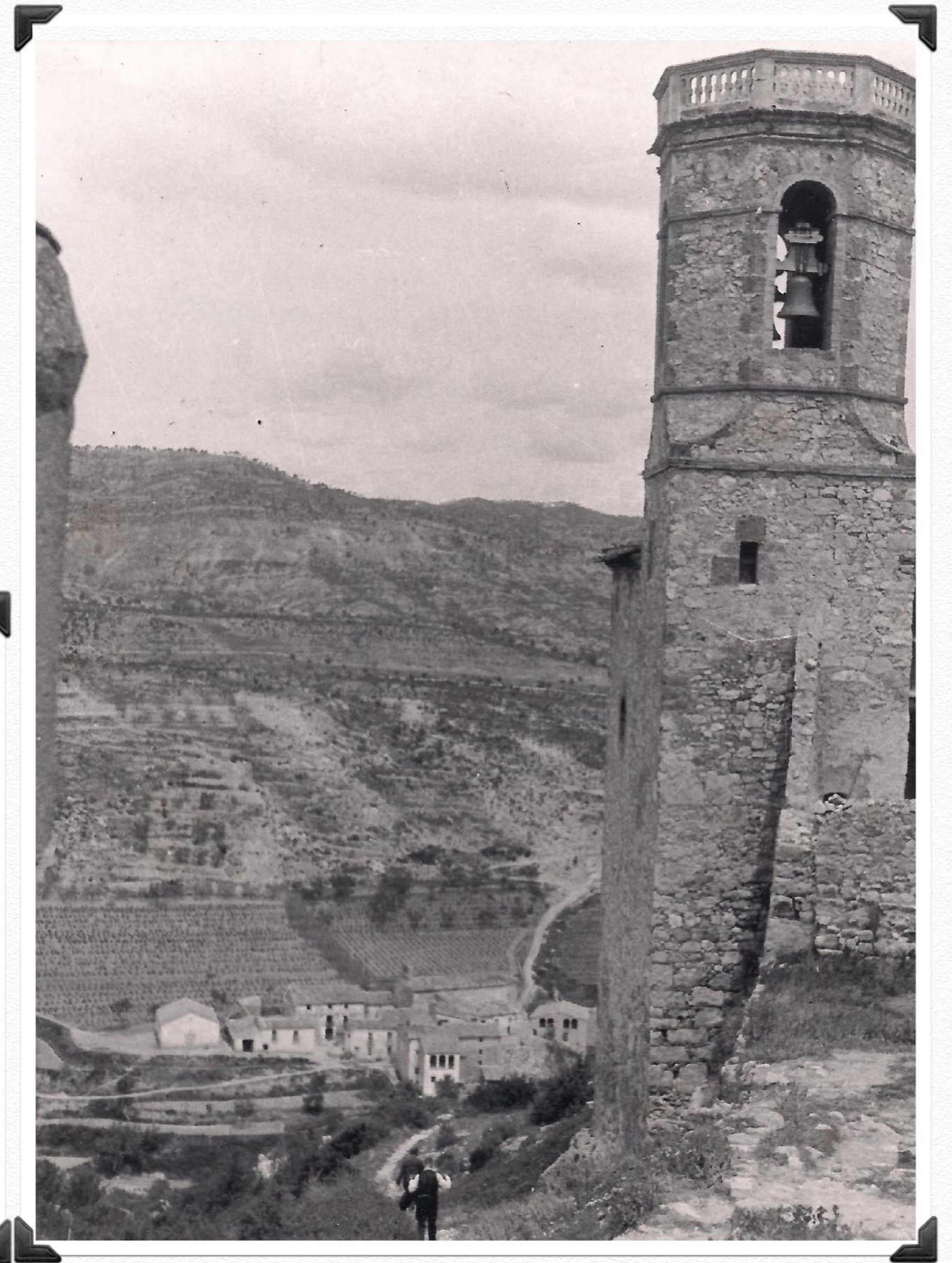
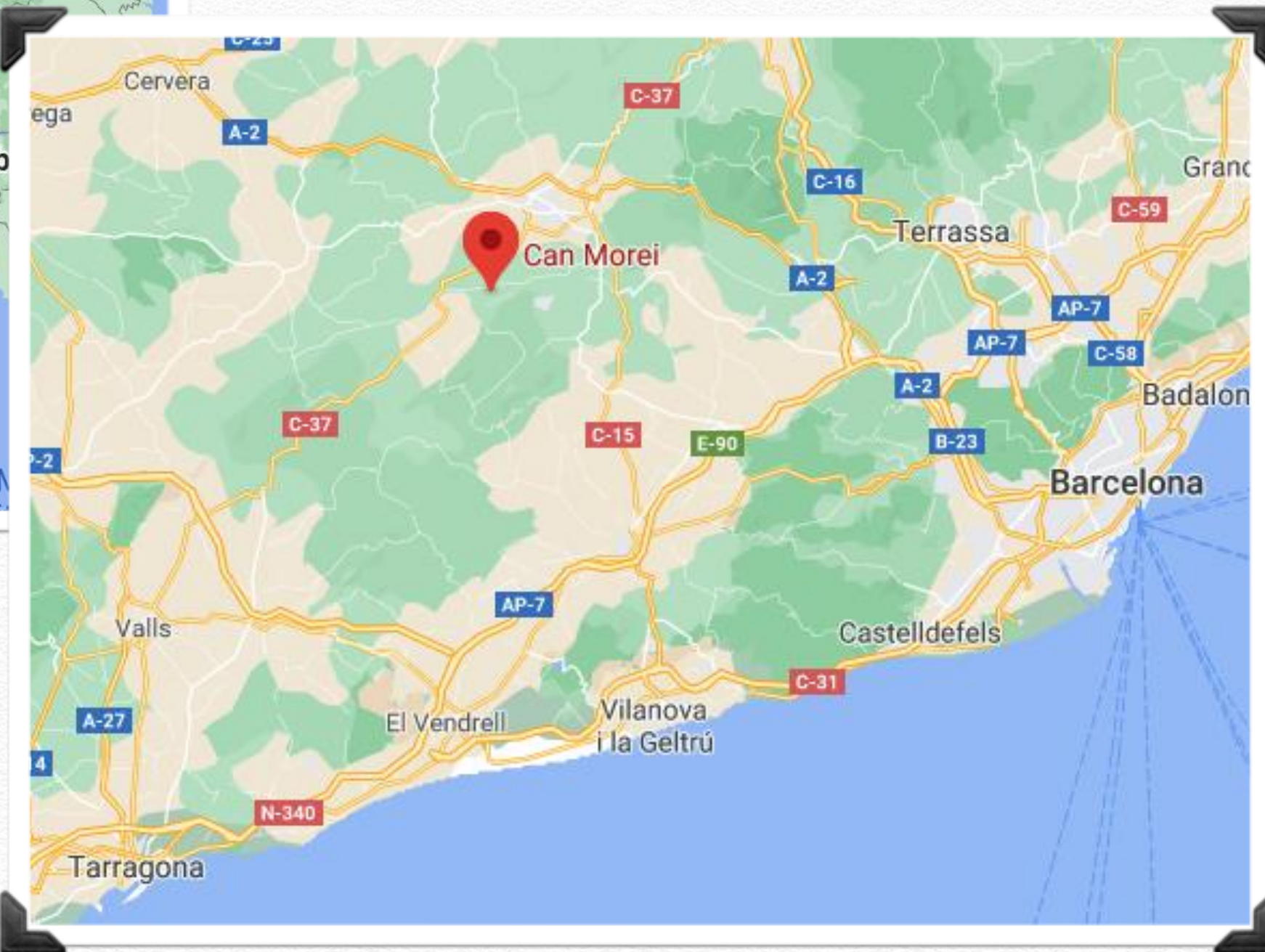
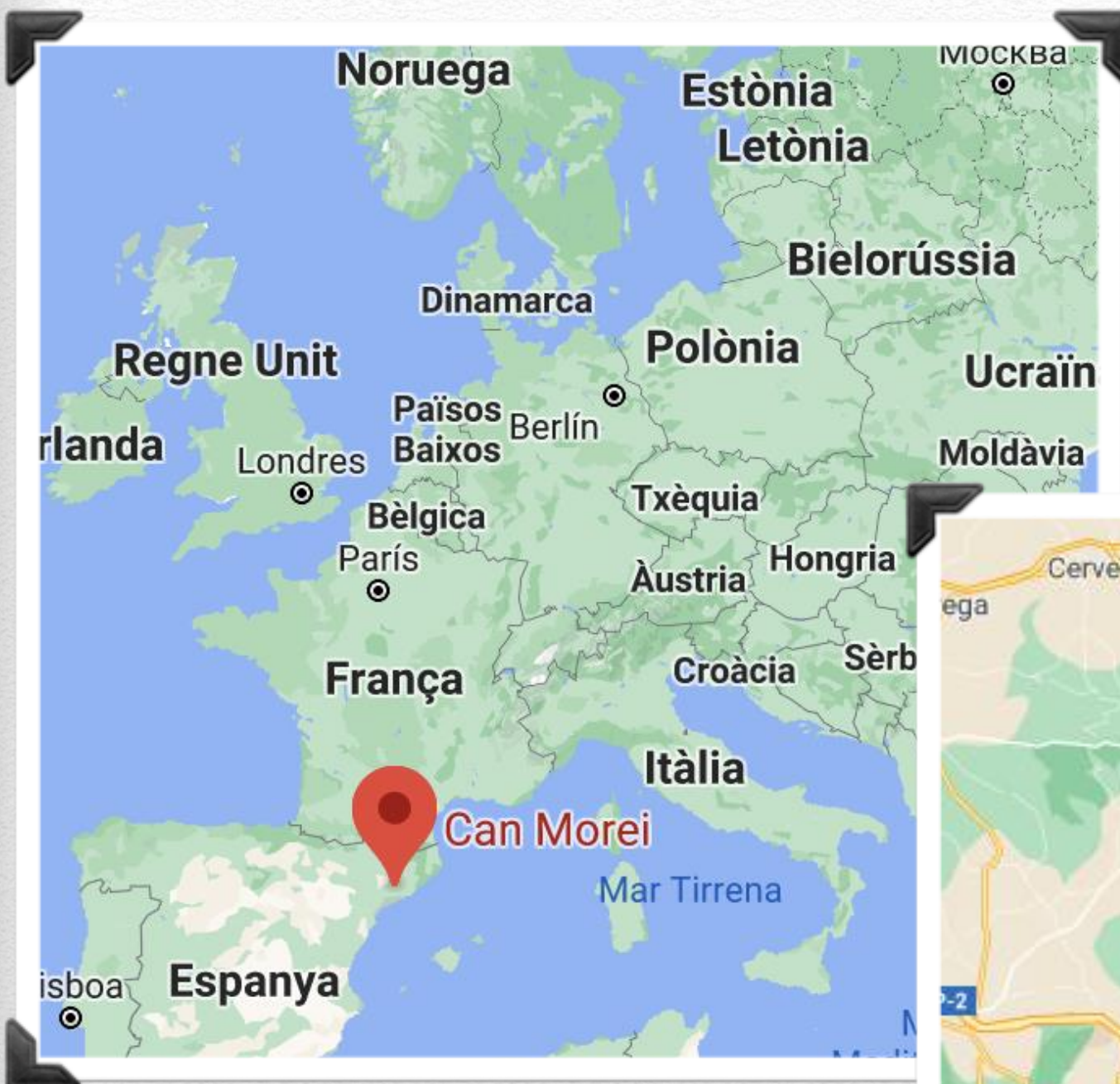
Can Morei

Accessible and inclusive vacation apartments



Santa Candia (Orpí)

- ❖ Small town in the Anoia region (Barcelona)
- ❖ Romanic church 10th century and Gothic 15th century
- ❖ 33 inhabitants in 1930, currently uninhabited



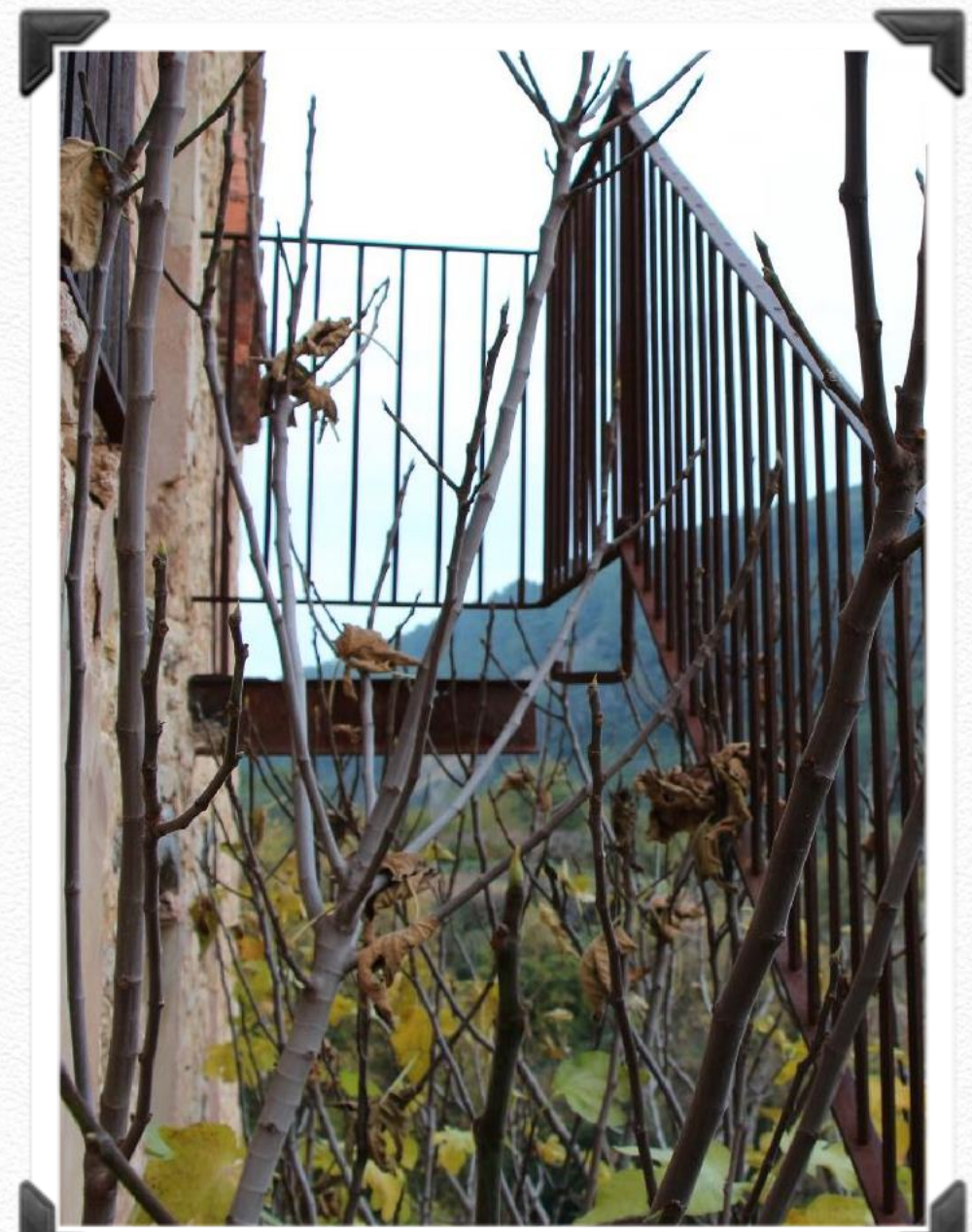
Purchase of the farm

- ❖ 2006, purchase of the farm and buildings.
- ❖ Family project for agricultural use
- ❖ Initial state of the buildings, flagging and close to ruin.



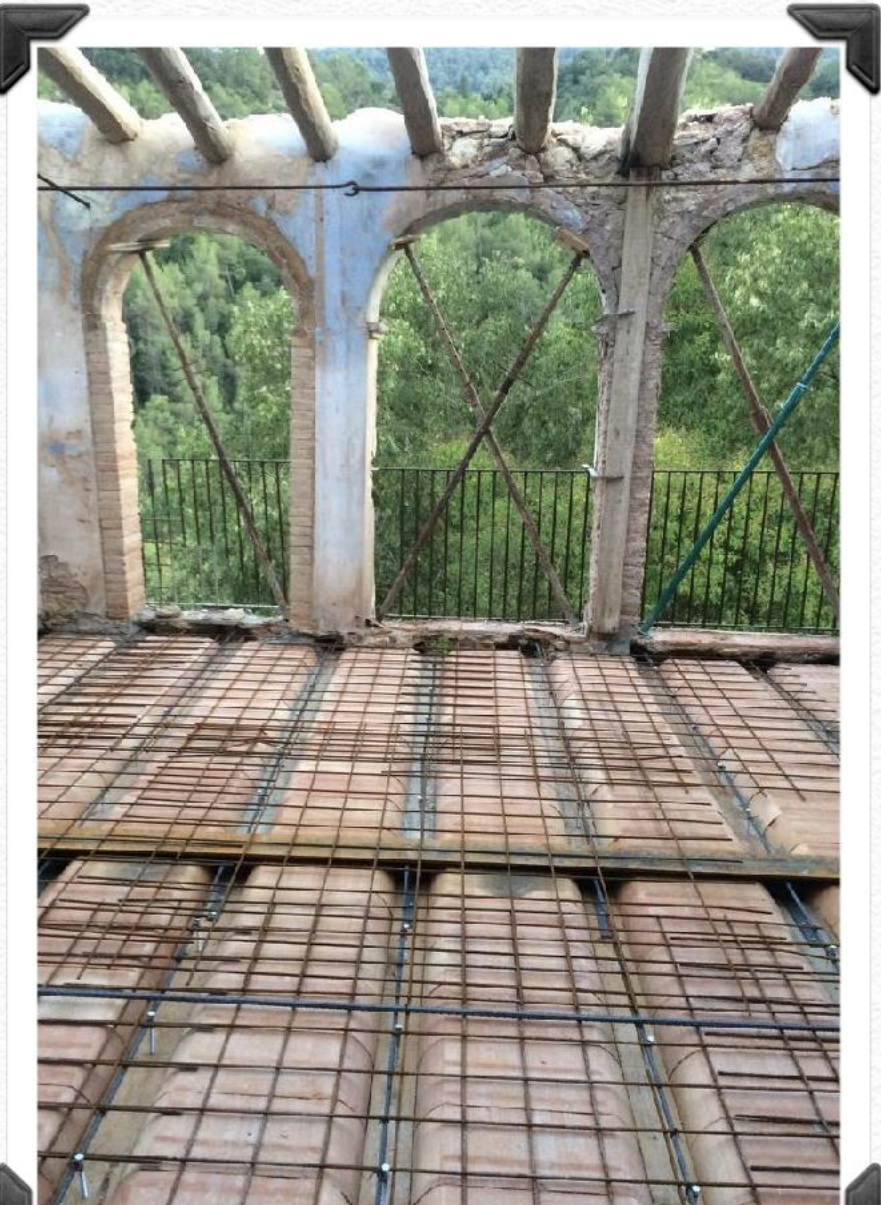
Collapse

- ❖ In the period 2008-2010 the buildings suffer progressive collapse of the roofs
- ❖ Many cracks and severe structural damage appear, leading to total ruin of buildings.



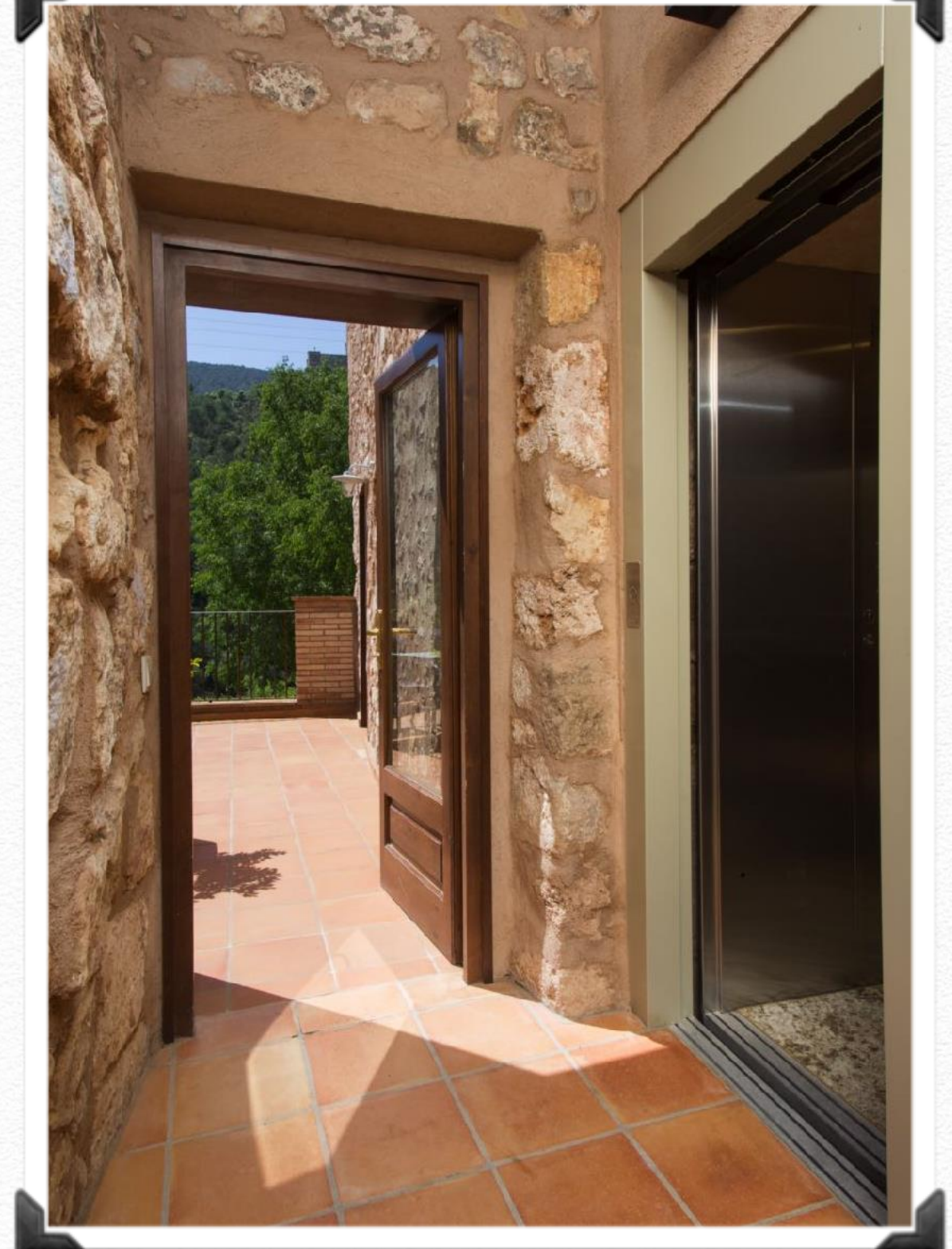
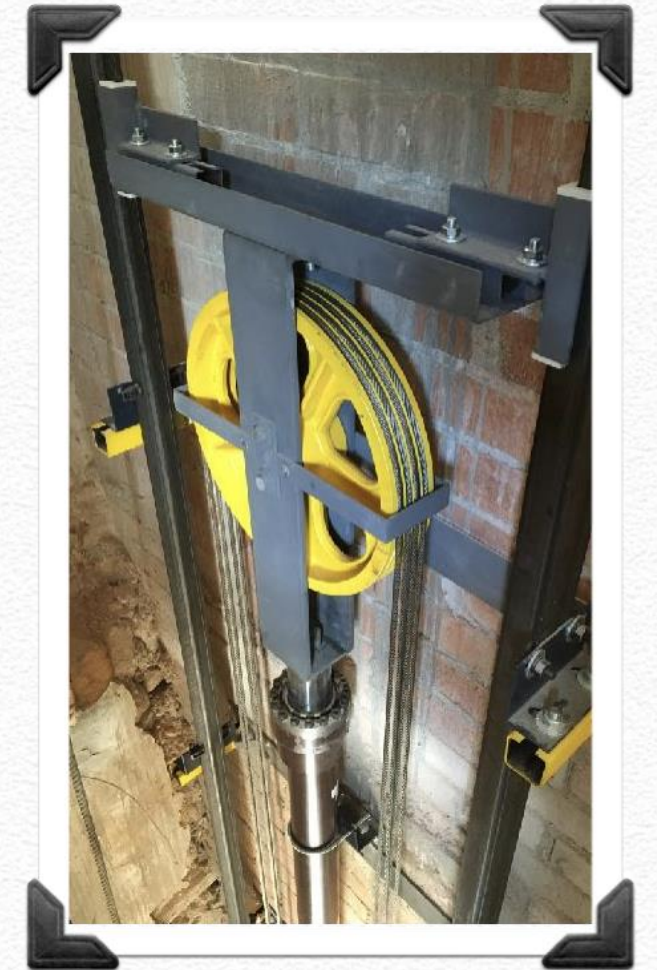
The project

- ❖ Clear idea of quality tourist apartments with large spaces, light and windows, without interior stairs. Noble materials stone, wood and iron.
- ❖ Oriented to foreign tourists, who consider our location as an ideal base for holidays near Barcelona.
- ❖ 2010 start of reconstruction work. Until 2017 eight years of work and investments.



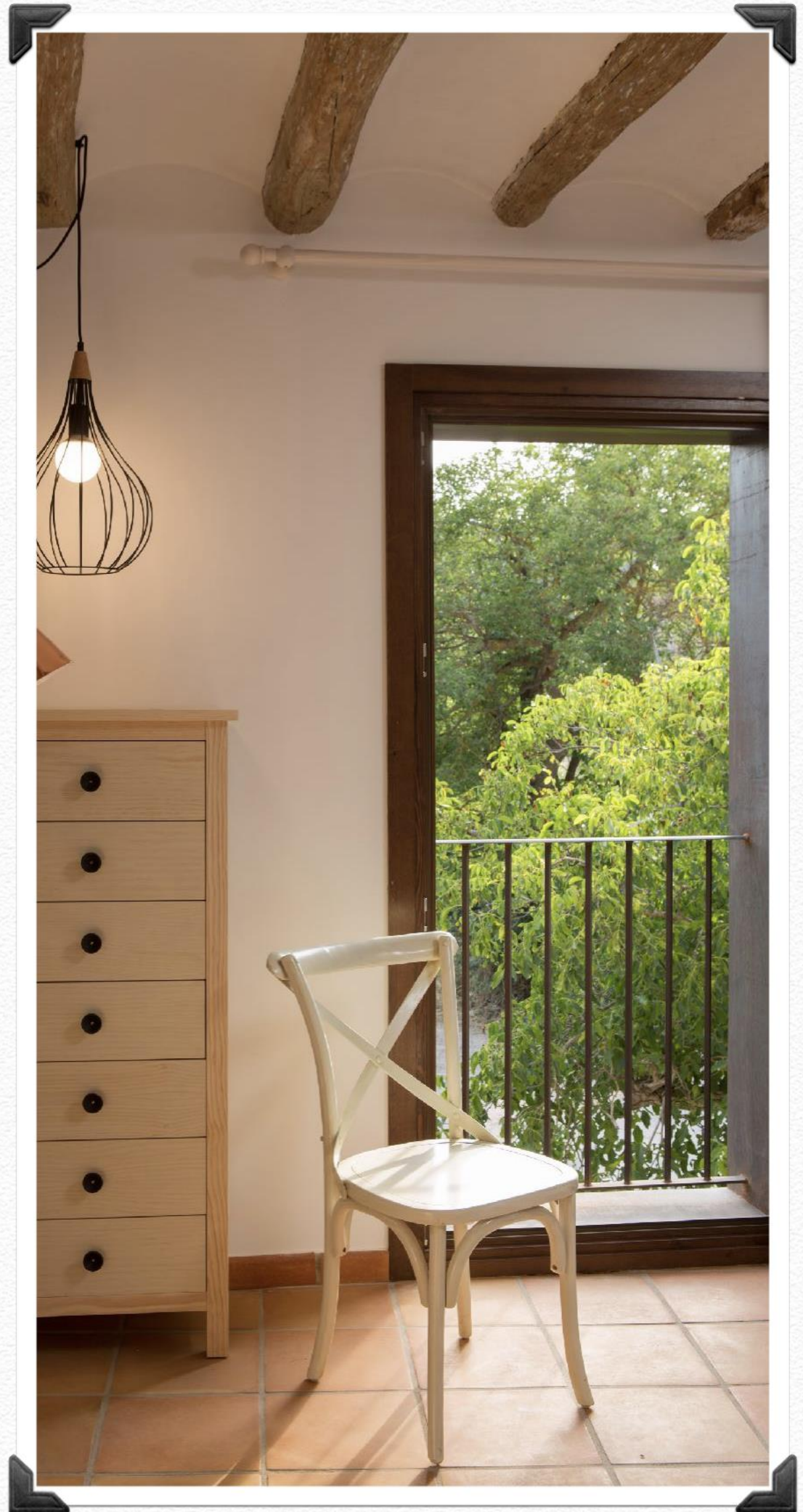
First accessibility concepts

- ❖ Initial basics: stairs, levels, doors and bathrooms.
- ❖ The elevator, a key piece on the four levels of the building.
- ❖ The interior routes must be accessible, without barriers, passing through "noble" places.



Windows

- ❖ Opening of large windows that reach the floor in bedrooms and living rooms.
- ❖ Wooden frames and windows with an external iron frame without lintel to facilitate fitting with the irregular stone wall.



The bedrooms

- ❖ Large spaces that allow access.
- ❖ All rooms contain beds that can be made together or separately.



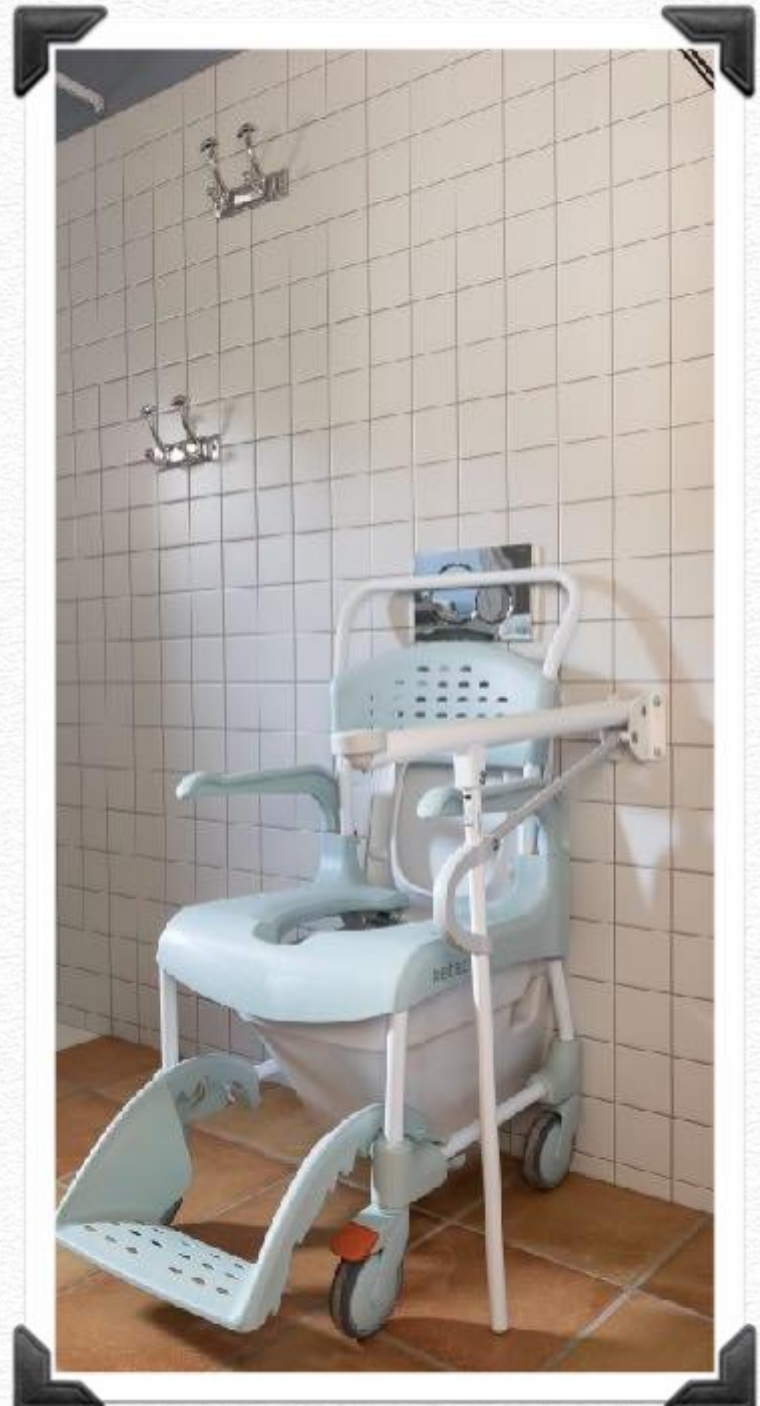
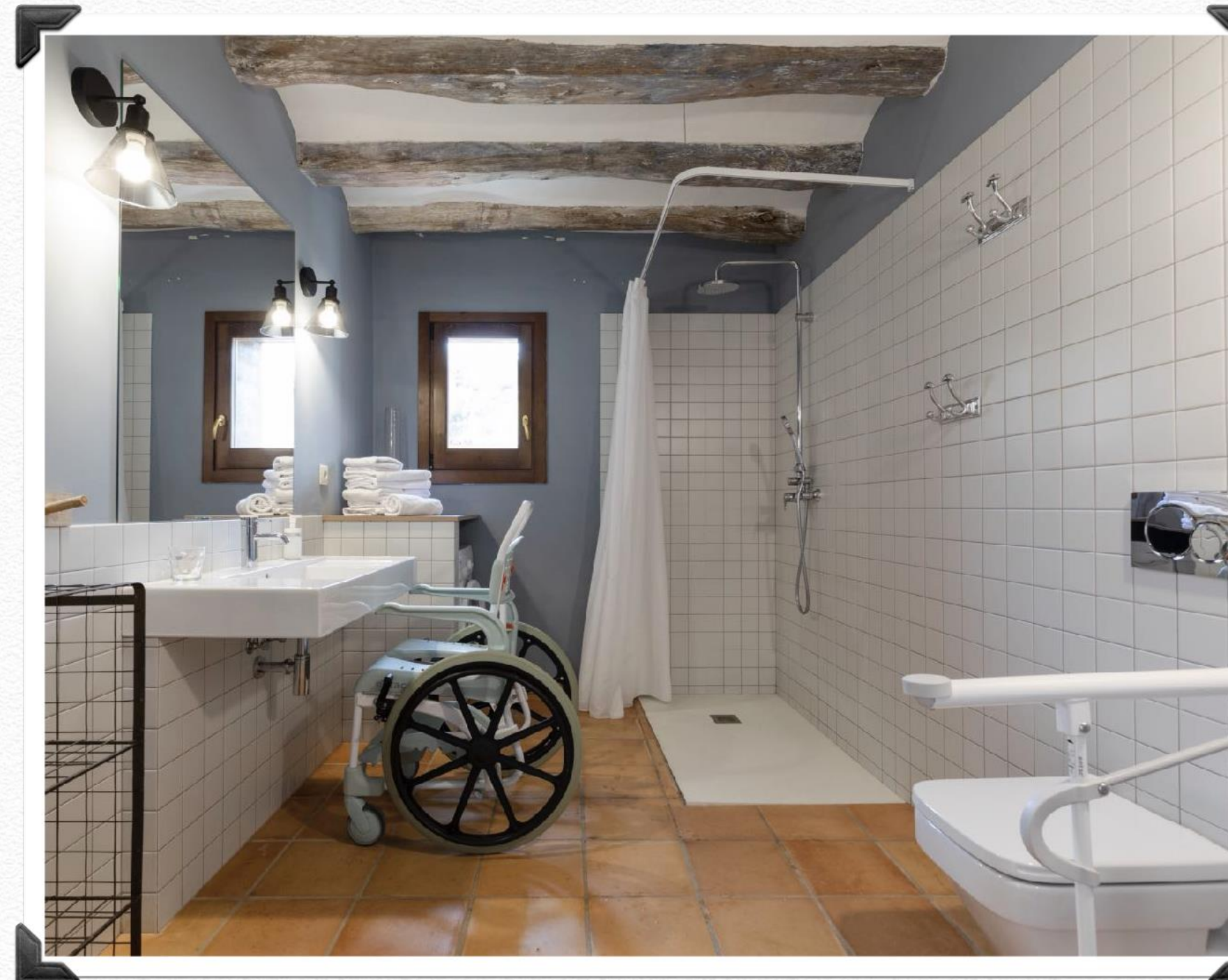
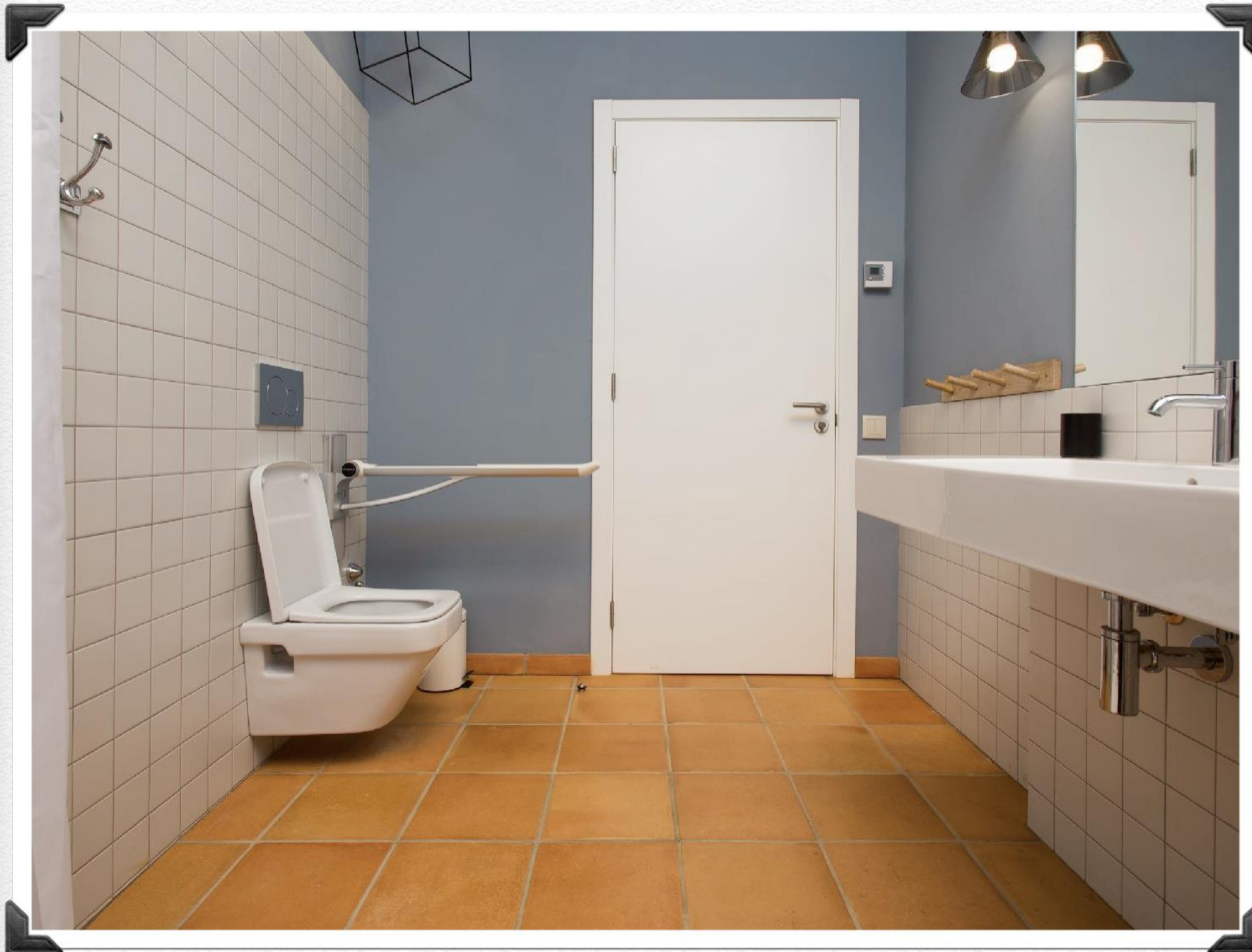
Living rooms and loft kitchens

- ❖ The living-dining room and kitchen space conceived in a loft format, with lots of light.
- ❖ The 50cm high sofas.



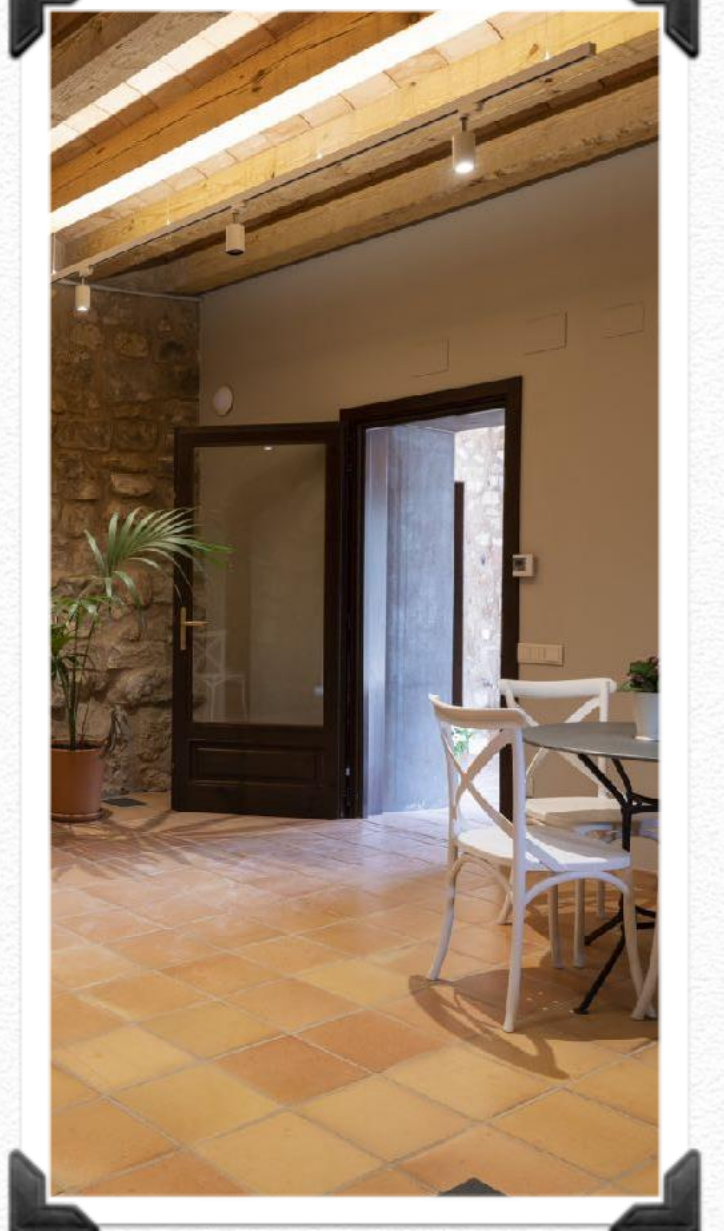
The bathrooms

- ❖ Sink and mirror level. Floor level shower tray without enclosures. Height adjustable bars.
- ❖ Level hangers and washing machine with front opening.
- ❖ Bath chairs, with and without rings.



The Terraces

- ❖ Barrier-free passages, doors 90 or 100 cm.
- ❖ Good communication between common areas



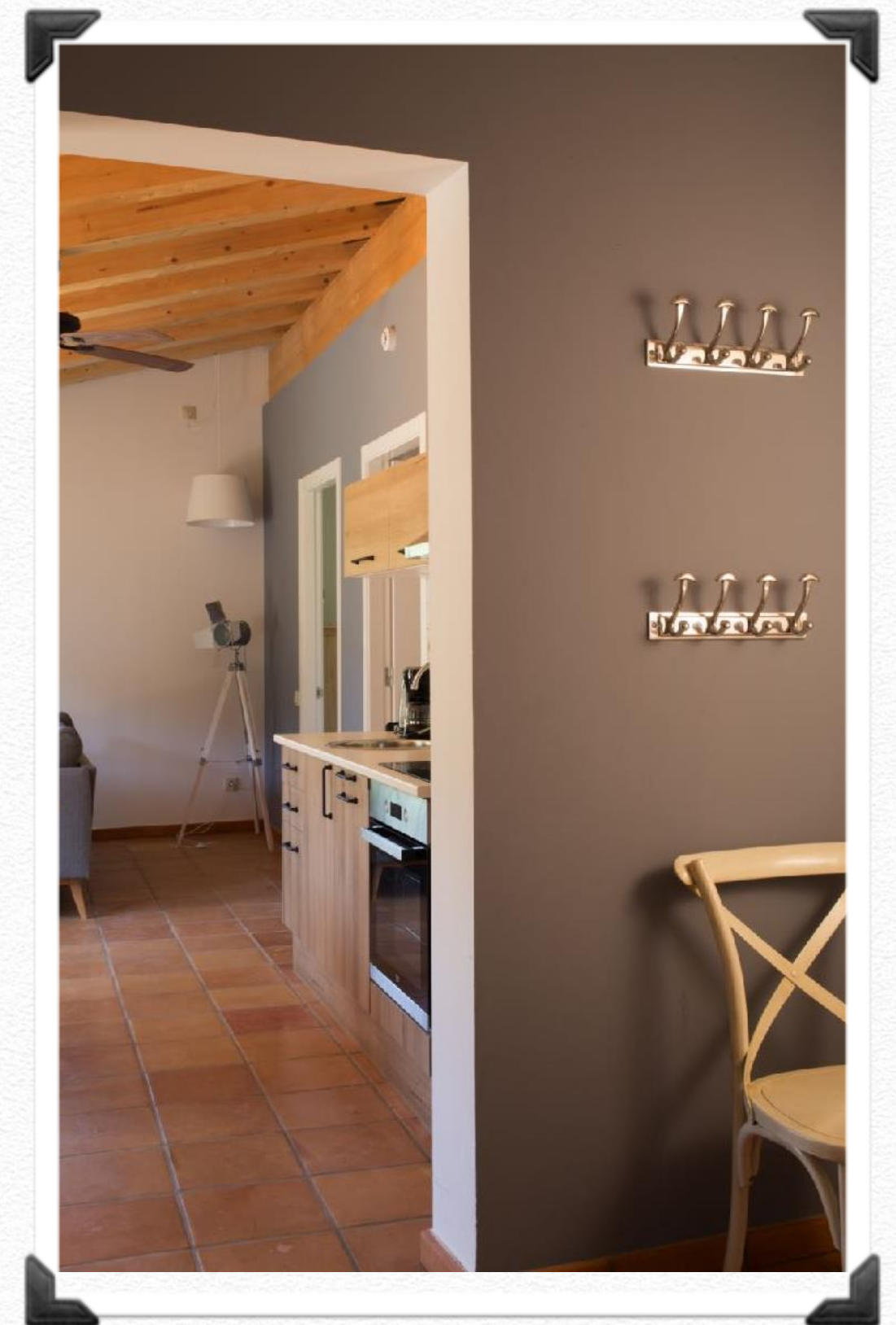
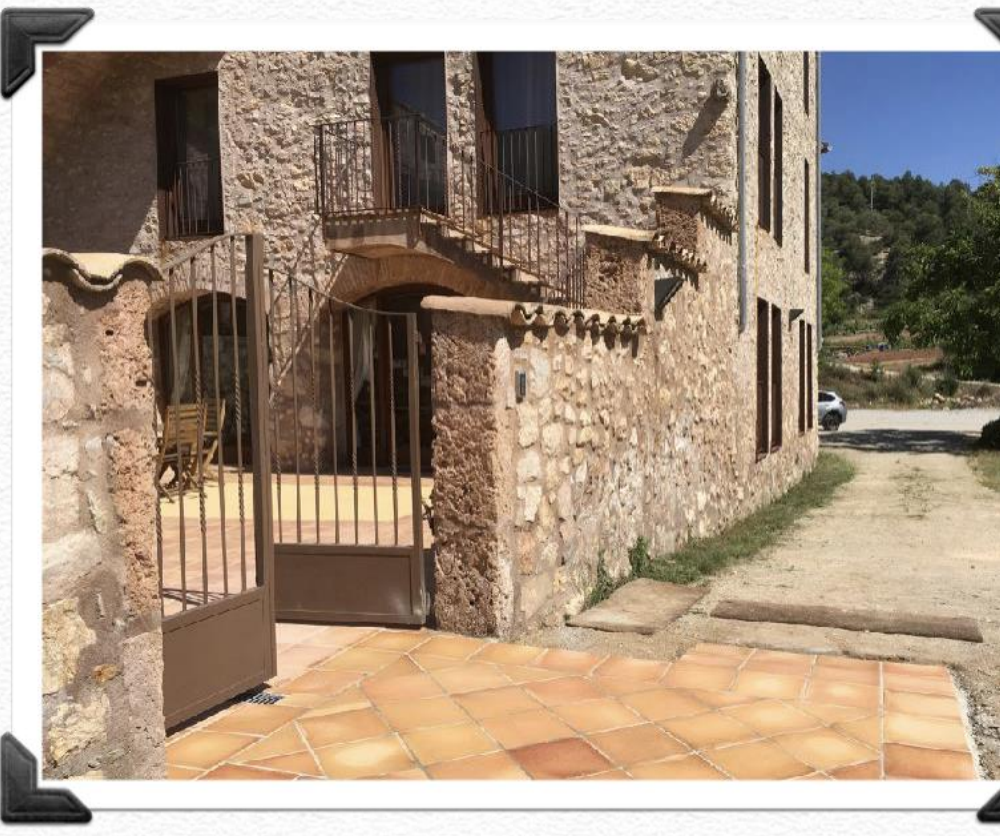
The pool

- ❖ Self-managing hydraulic chair.
- ❖ Double loungers, 0.45 cm high.



The details

- ❖ Braille lettering and relief
- ❖ Medicalized bed (available)
- ❖ Kitchen workspace
- ❖ Main entrance and parking access
- ❖ Level wall hangers
- ❖ Long-handled wardrobe hangers.
- ❖ Accessible cabinet door mechanism



Meeting room

- ❖ Multipurpose room equipped with 40m2 magnetic loop.
- ❖ Common dining terrace with glass doors connected to the multipurpose room.
- ❖ Accessible WC in the common area of terrace and living room.



Environmental measures

- ❖ Ground heating system and hot water with biomass boiler.
- ❖ Insulation in all the walls with maximum energy efficiency level.
- ❖ 25 thousand liter rainwater collection tank.

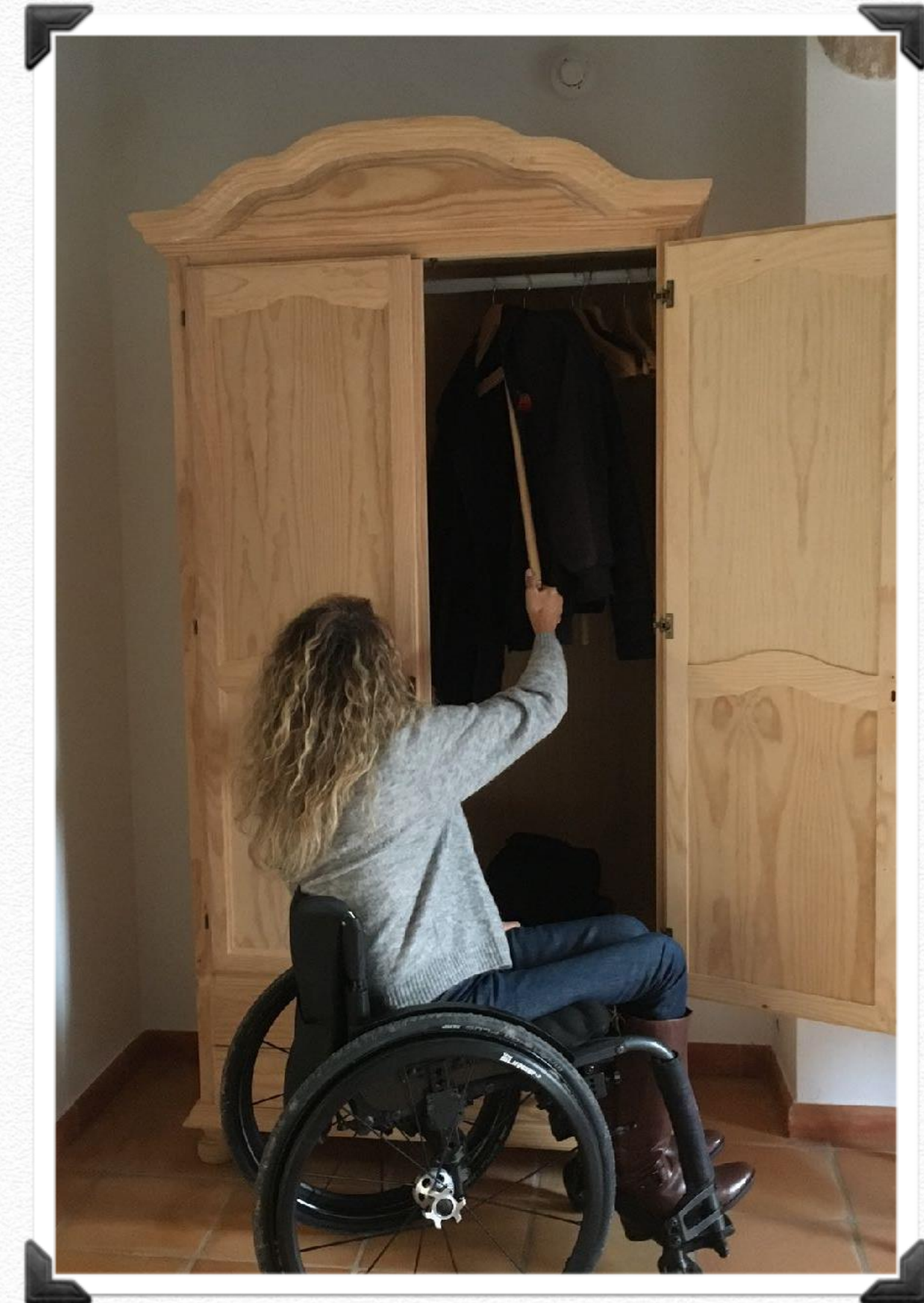


The change



Experience of our clients

- ❖ In 2019 and 2020 10% of our reservations have a person with a disability, most of them wheelchair users.
- ❖ Origin from 8 different countries, many of them with great travel experience.
- ❖ The level of satisfaction has been maximum, especially valuing the concept of invisible accessibility applied in all Can Morei spaces.
- ❖ The experience of our clients always enriches us and helps us improve.



Conclusions

- ❖ 8 apartments, 24 beds, 7 of them accessible (22 beds)
- ❖ In a major renovation, thinking about accessibility from the start does not entail significant additional costs.
- ❖ Always apply practicality. Usability always goes ahead of the regulations.
- ❖ Work for an invisible accessibility, integrated into the design.
- ❖ Thinking of the self-sufficiency of all people, we think of their dignity.



New challenges

- ❖ Outdoor spaces are the new challenges. Prepare gardens and paths.
- ❖ Collect accessible services, restaurants, activities and itineraries in the region. Encourage other establishments so that we can offer an ACCESSIBLE TOURIST DESTINATION.
- ❖ We think that it is necessary to define simple models where new technologies and electric mobile elements are integrated with infrastructures that are not necessarily complicated or perfect, in order to achieve economic projects that are easy to maintain.
- ❖ Execute projects with public-private collaboration.





Can Morei
Apartments & Resort

www.canmorei.com

Thanks a lot !!

contact: Jordi Reixachs, info@canmorei.com